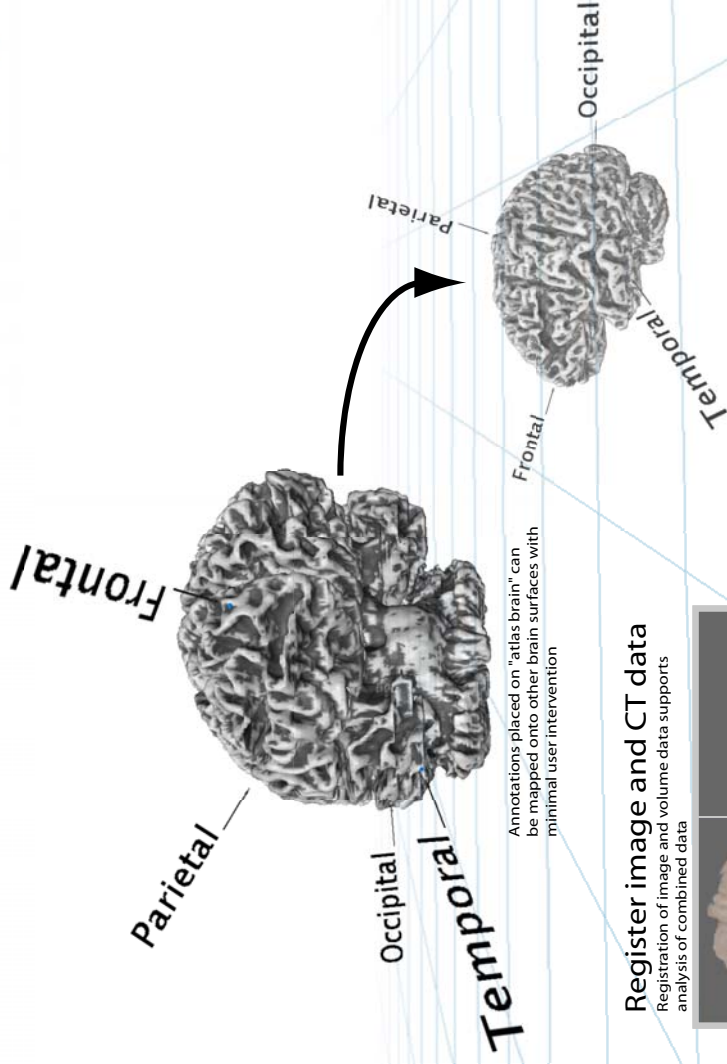
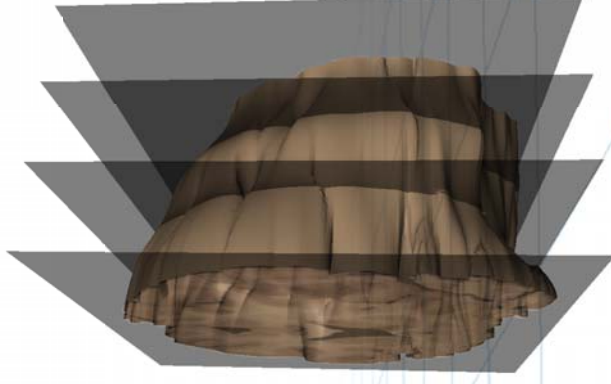
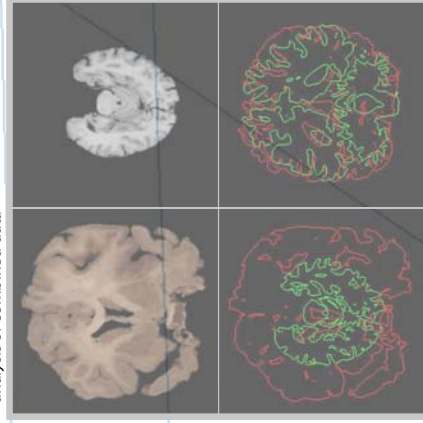


Brain Atlas Mapping



Register image and CT data

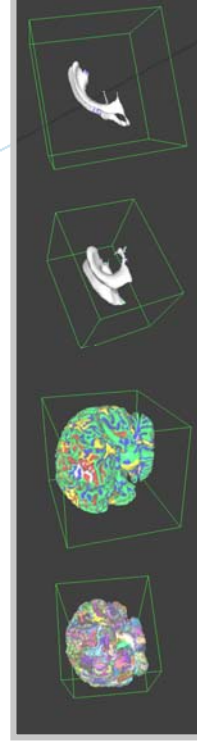
Registration of image and volume data supports analysis of combined data



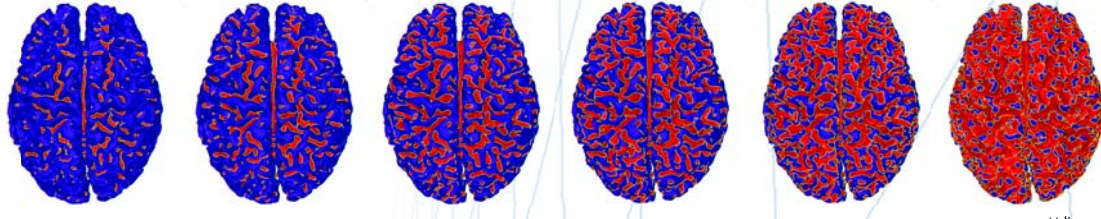
Extruded surface from landmarks placed on sparse slices

Landmarks placed sparsely on a few slices can be automatically extruded to generate a complete surface representing the desired features

Mapping sulci and gyri using curvature classification based on curvature



Surface features such as sulci and gyri are classified based on curvature. Regions are grouped together to form larger patches. These patches can be related to each other allowing the mapping or morphing of features



Curvature estimates permit the quantification of surface features

<http://graphics.idav.ucdavis.edu>



visualization and graphics research group

Alfred R. Fuller, Bernd Hamann, Kenneth I. Joy, Edward G. Jones,
Lars Linsen, Bruno A. Olshausen, Thomas W. Slinkard, Jim Stone,
Fabien Vivodtzev, Gunther H. Weber, David F. Wiley, Patrick C. Yau